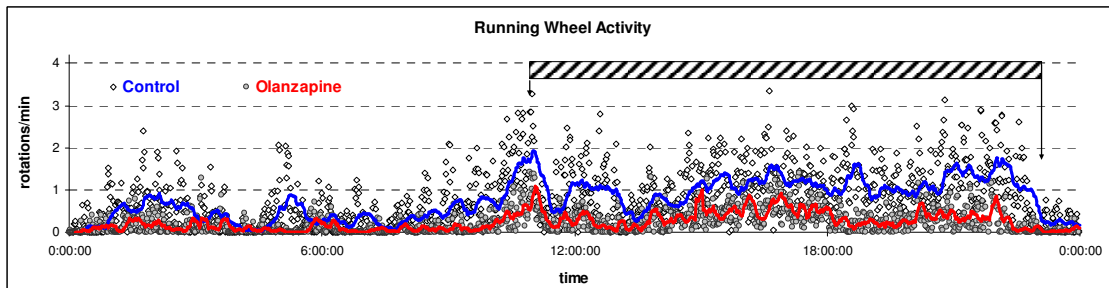
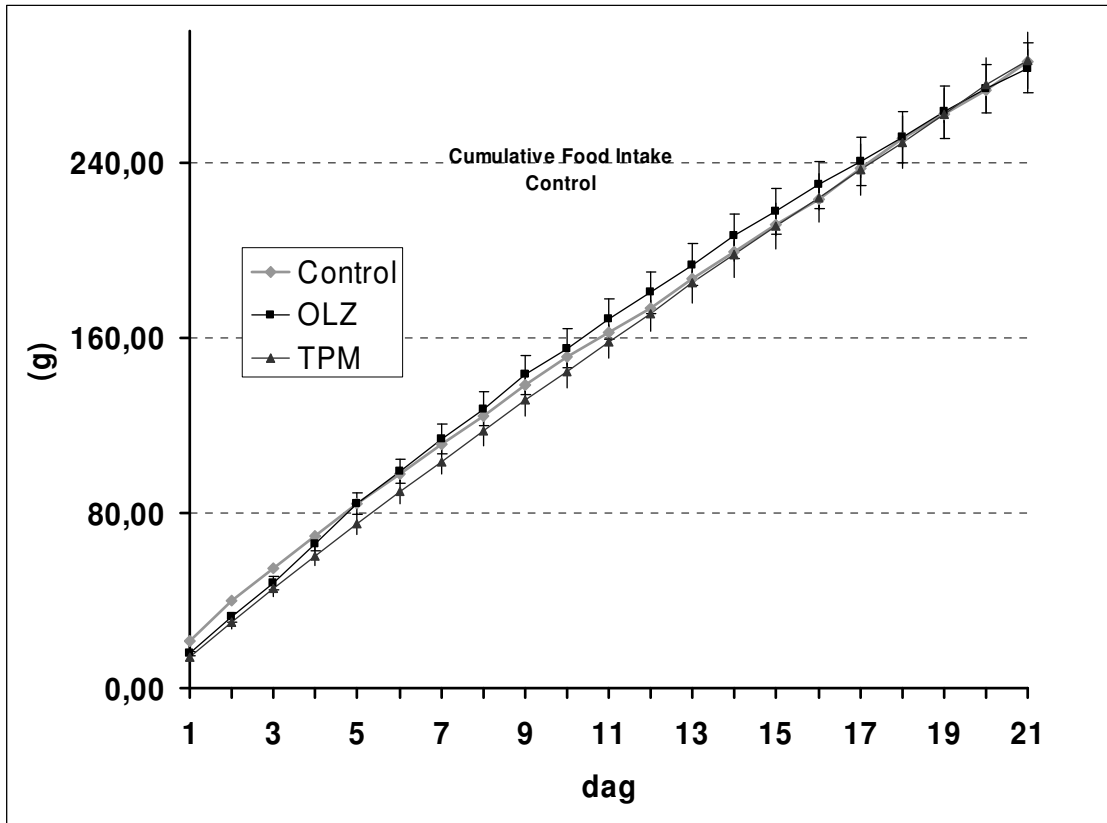


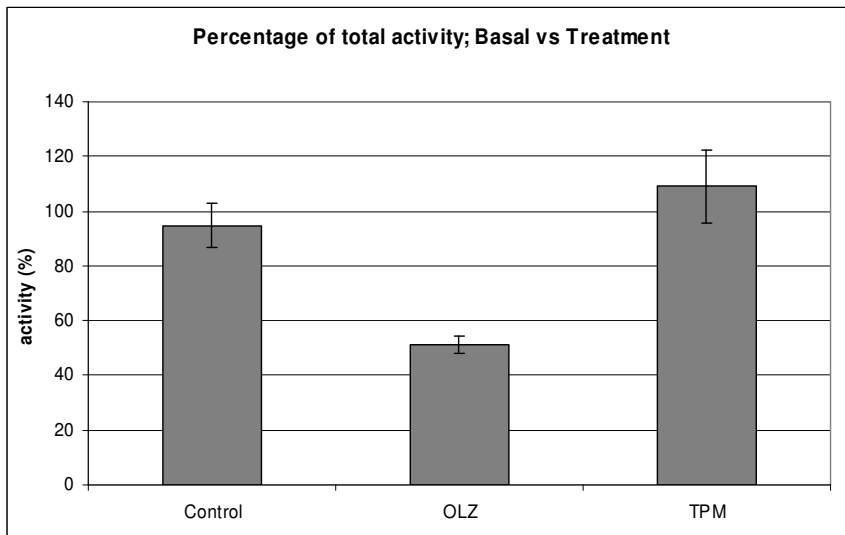
Figur 1 : Olanzapine and Topiramate Reduce Body Weight (in male)



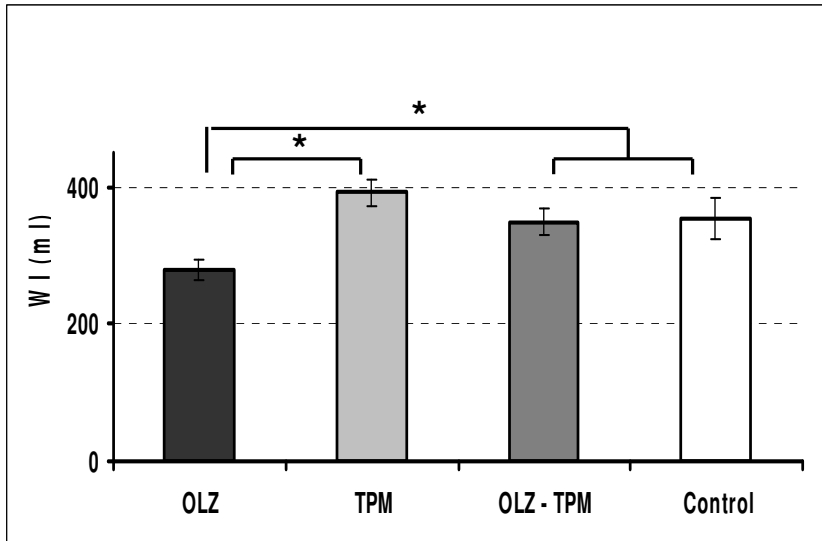
Figur 2: Olanzapine decreases spontaneous wheel running activity to ~27% (P < 0.01) in comparison to controls.



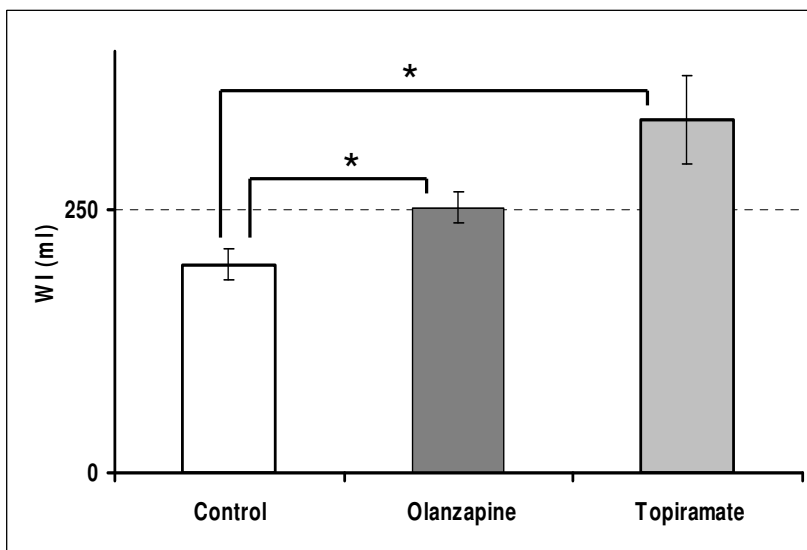
Figuur 3: cumulatieve voedselopname



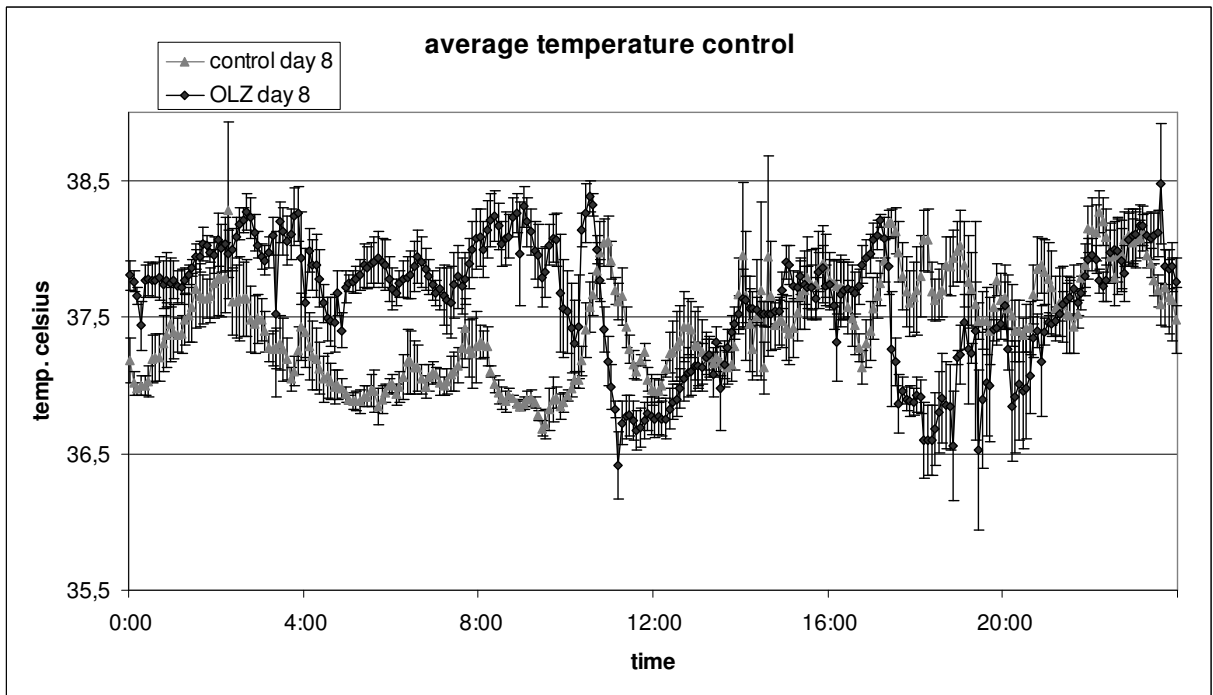
Figuur 4: totale activiteit na behandeling ten opzichte van activiteit voor behandeling.



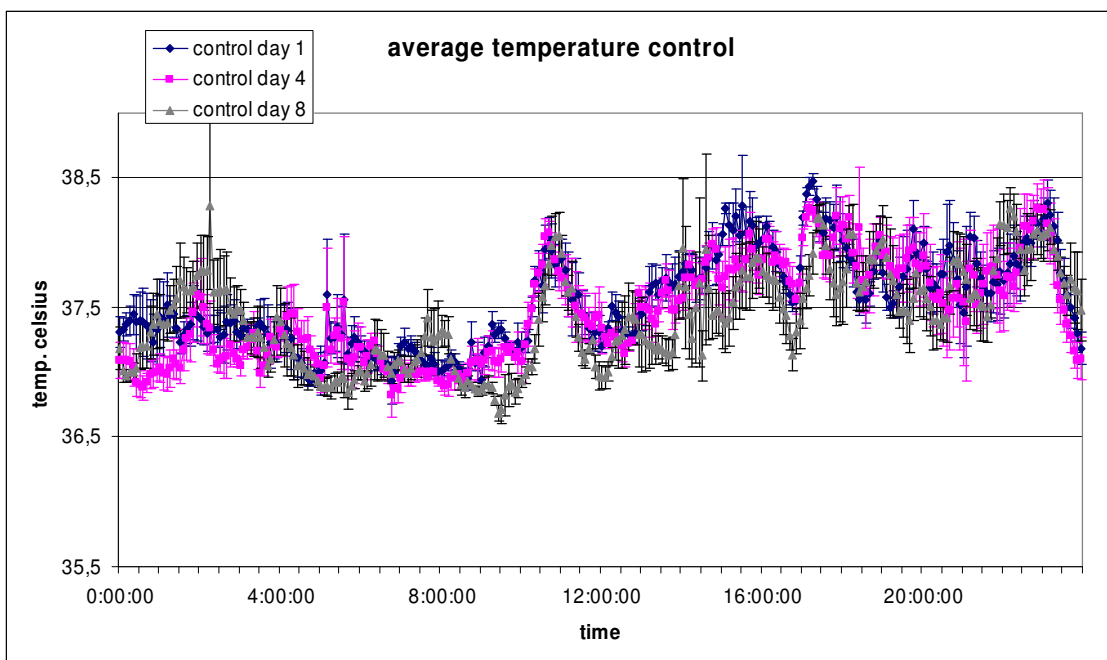
Figuur 5: cumulatieve waterinname bij mannetjesratten



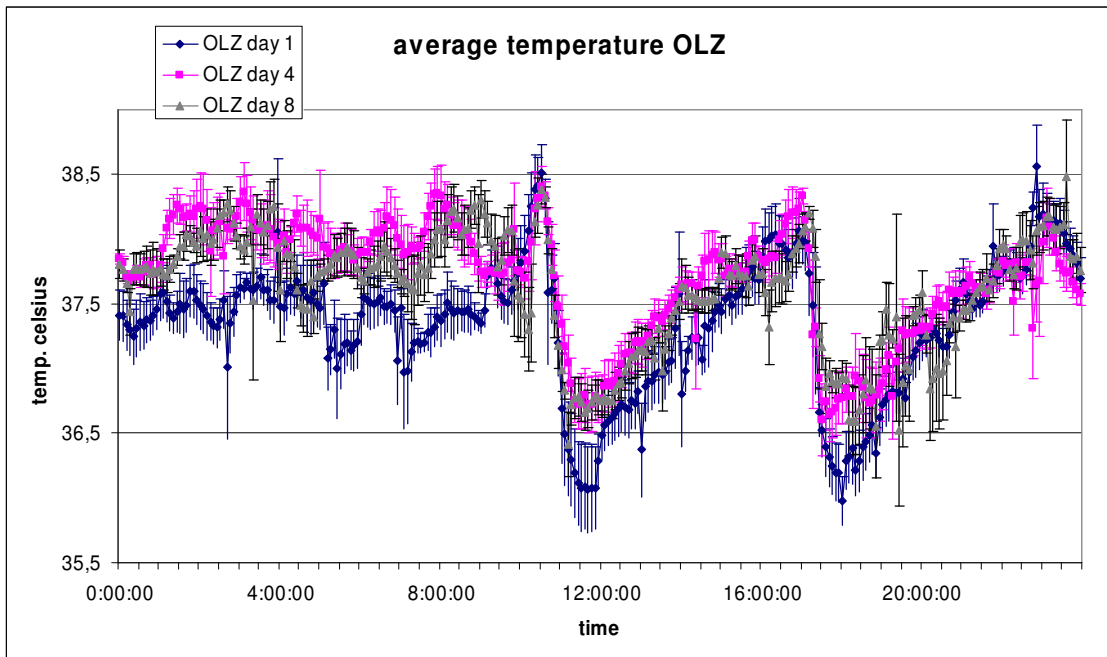
Figuur 6: cumulatieve waterinname bij vrouwtjesratten



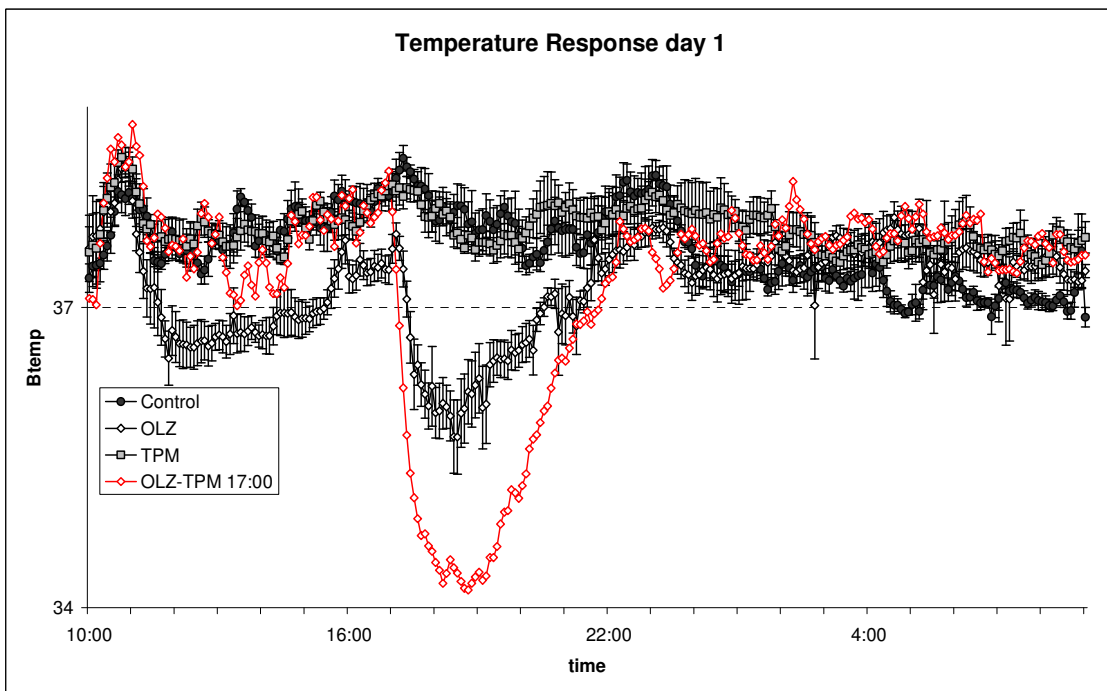
Figuur 7: temperatuur controle en OLZ dag 8



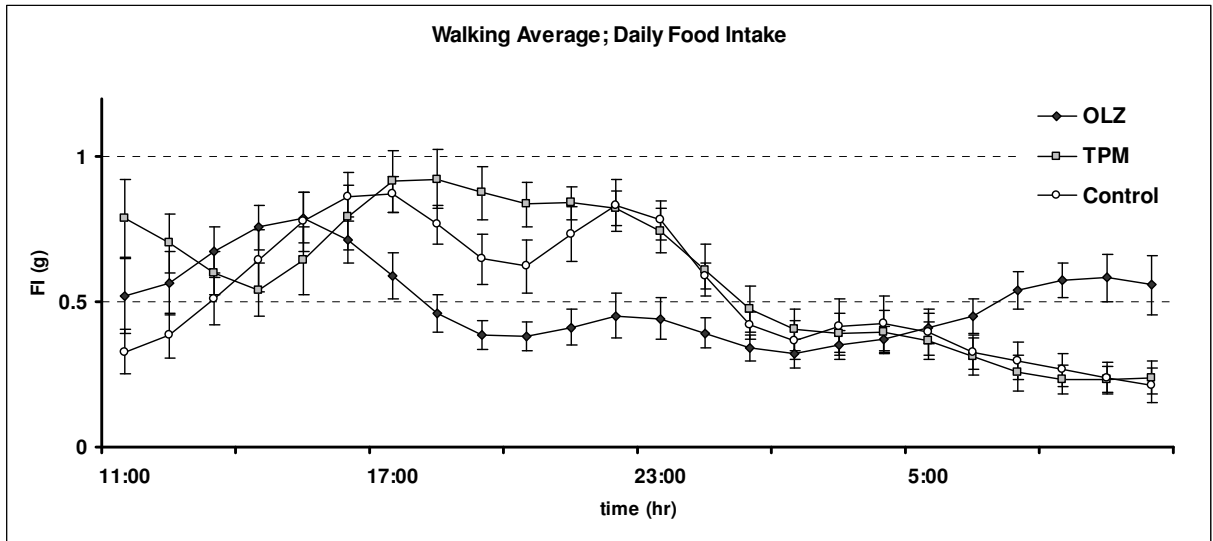
Figuur 8: gemiddelde temperatuur controle dag 1, 4 en 8



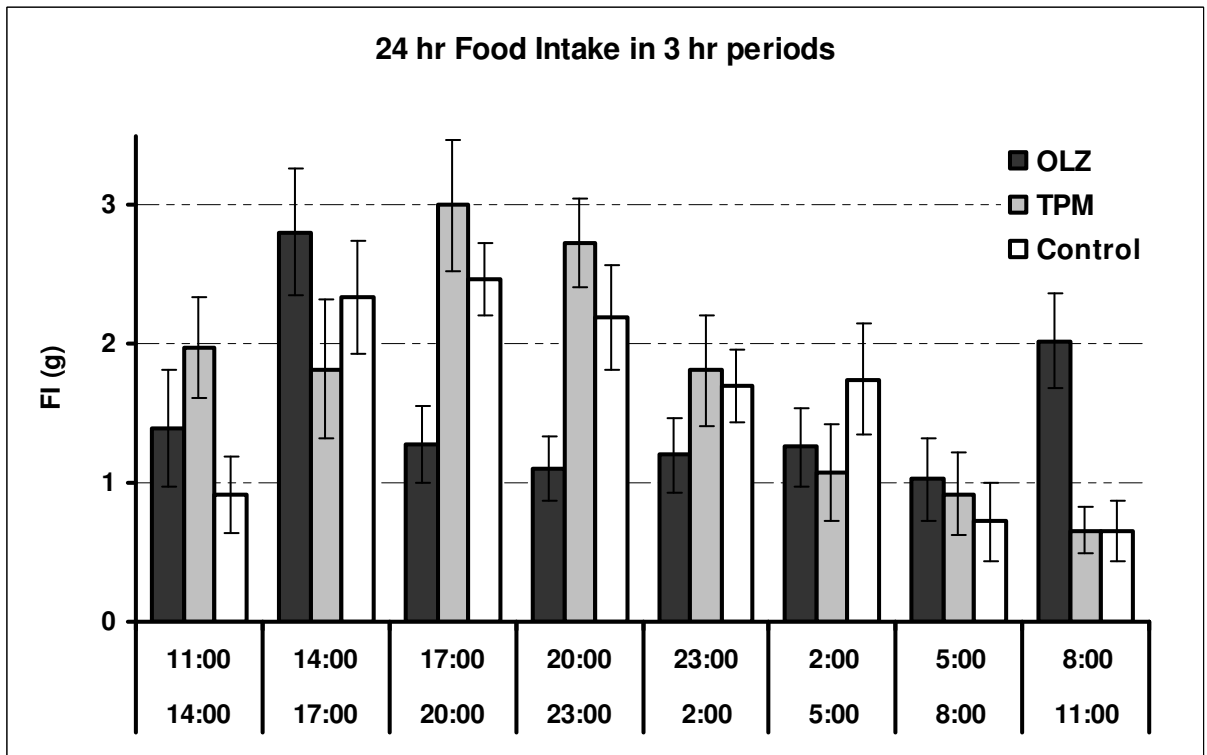
Figuur 9: gemiddelde temperatuur OLZ dag 1, 4 en 8



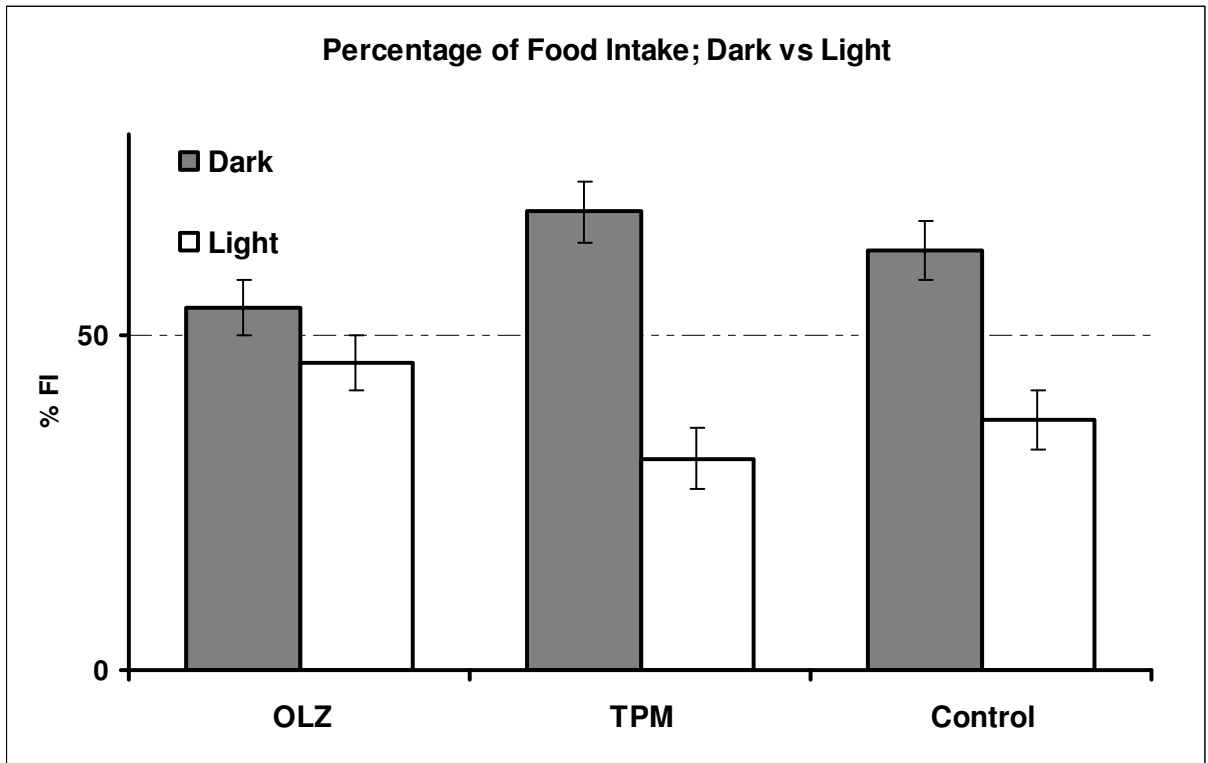
Figuur 10: temperatuur respons op dag 1 OLZ, TPM en controle



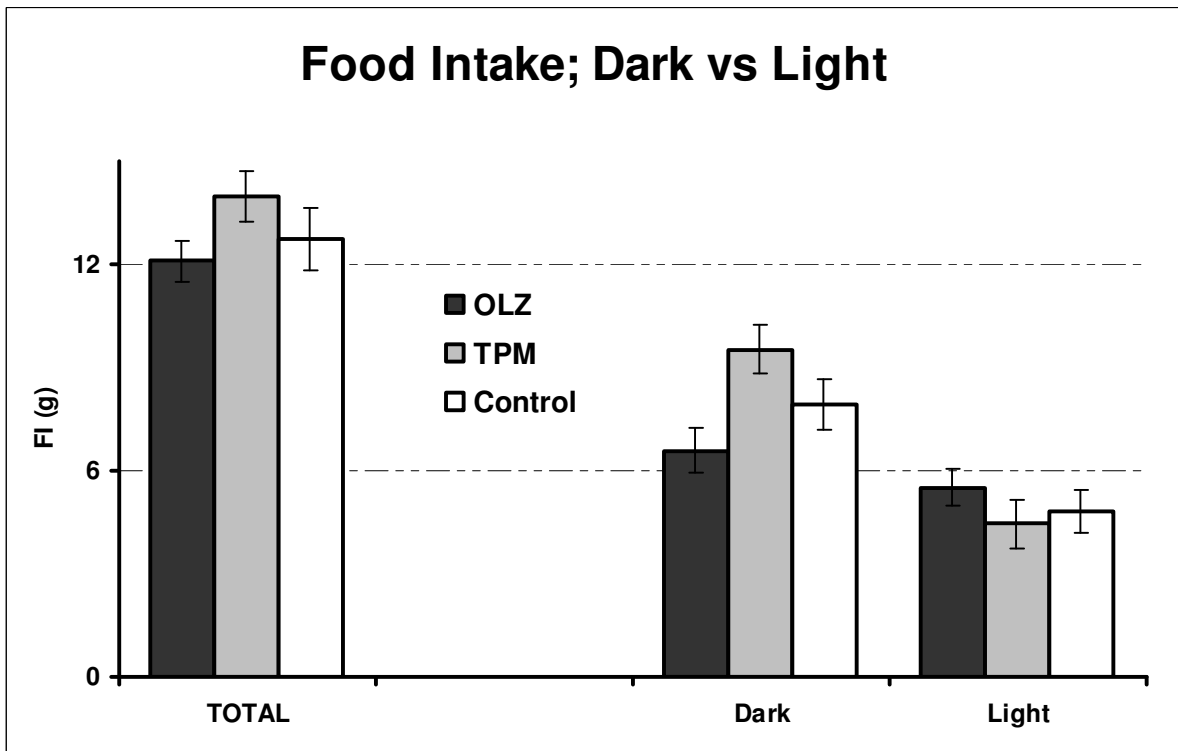
Figuur 11: dagelijkse voedselinname OLZ, TPM en controle



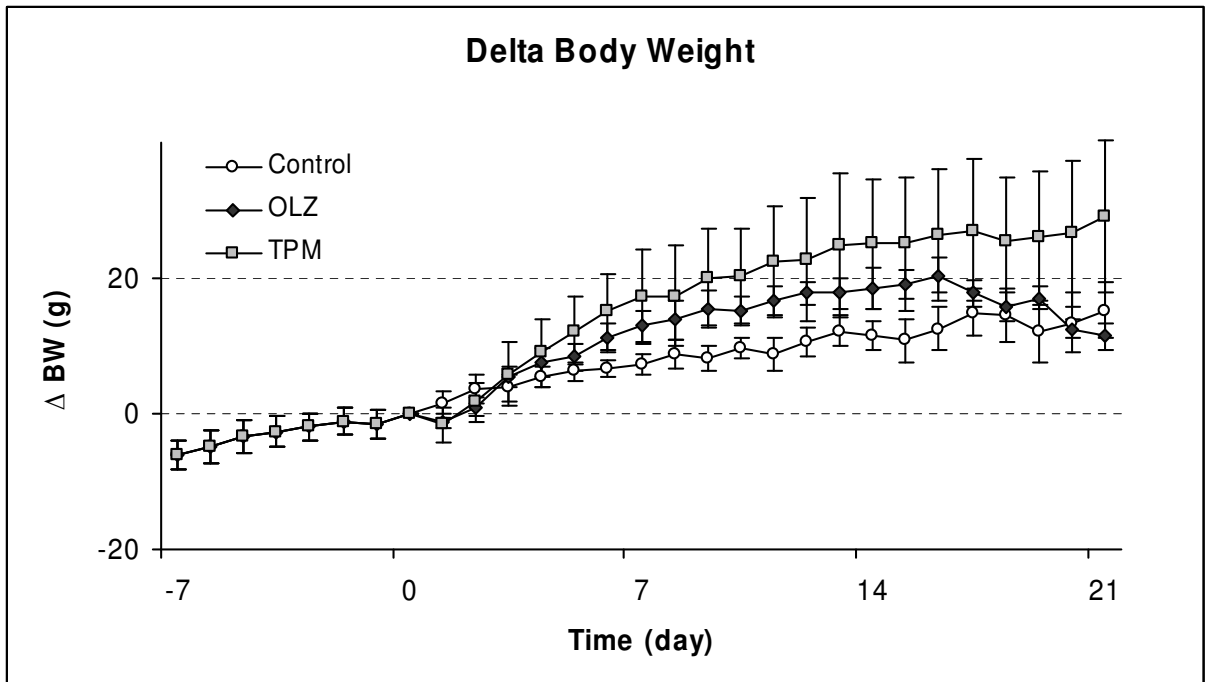
Figuur 12: 24 uur voedselinname OLZ, TPM en controle



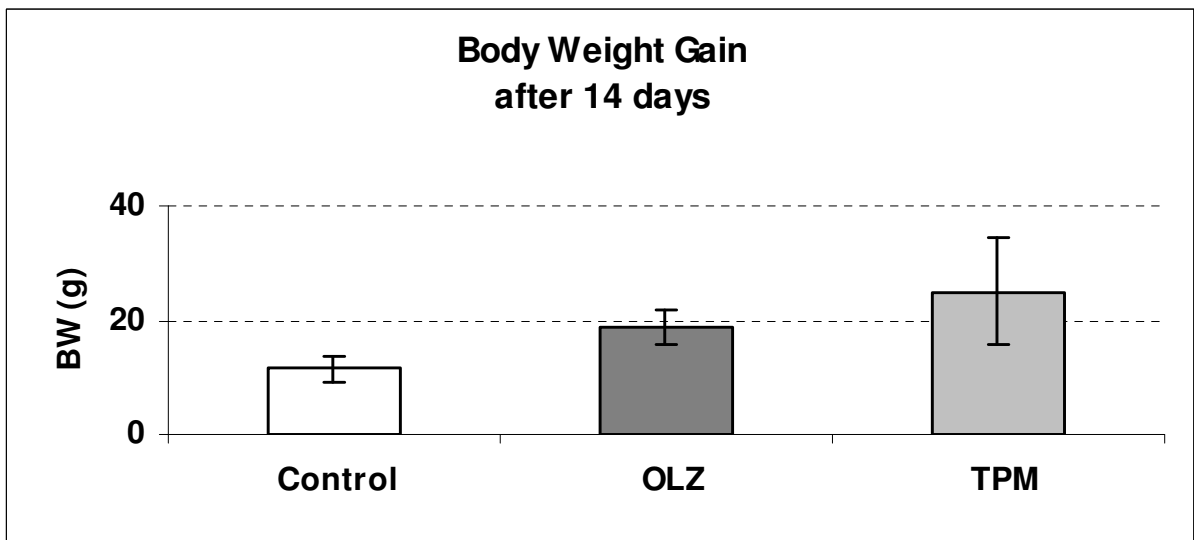
Figuur 13: percentage voedselinname licht en donkerperiode OLZ, TPM en controle



Figuur 14: voedselinname in licht en donkerperiode OLZ, TPM en controle



Figuur 15: delta lichaamsgewicht OLZ, TPM en controle



Figuur 16: toename in lichaamsgewicht na 14 dagen OLZ, TPM en controle